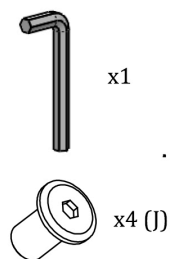




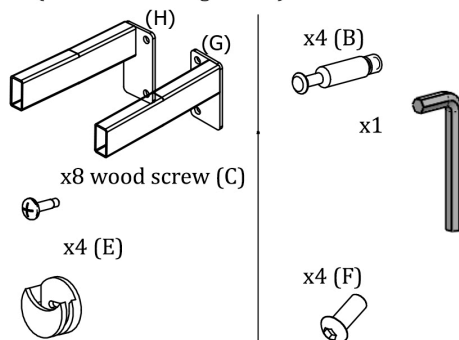
User manual - Euro' Design bed

1) Lower bed



2) Upper bed

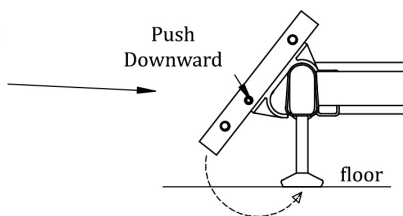
x4 (2 left side + 2 right side)



1st step - Chassis assembly (lower bed)

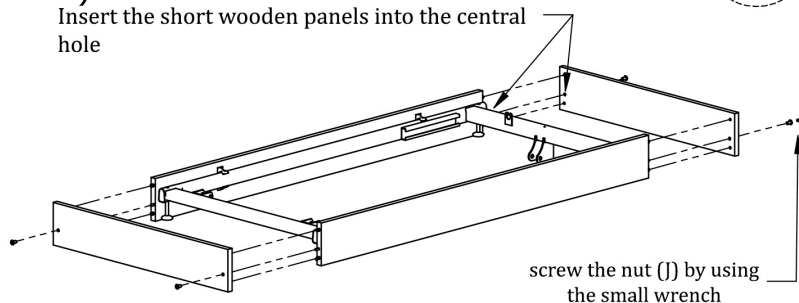
A)

Put the wooden panels onto the oval tube by clipping the black plastic parts on the metal tube. Make sure you do it the right way.



B)

Insert the short wooden panels into the central hole

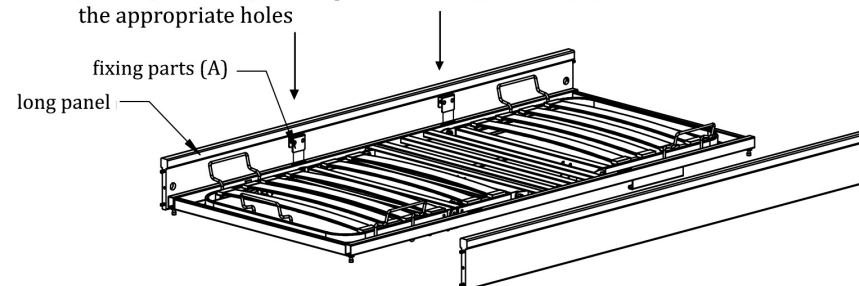


screw the nut (J) by using the small wrench

2nd step - Mattress platform assembly (upper bed)

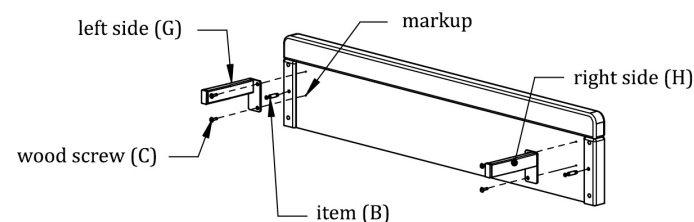
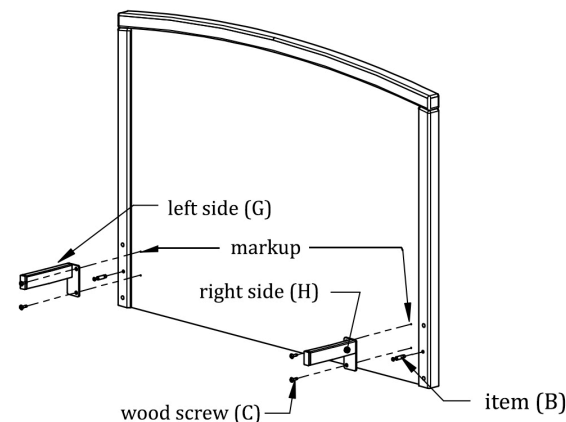
C)

Fit the long wooden panels in the mattress platform by pushing the fixing parts of the mattress platform (A) in the appropriate holes



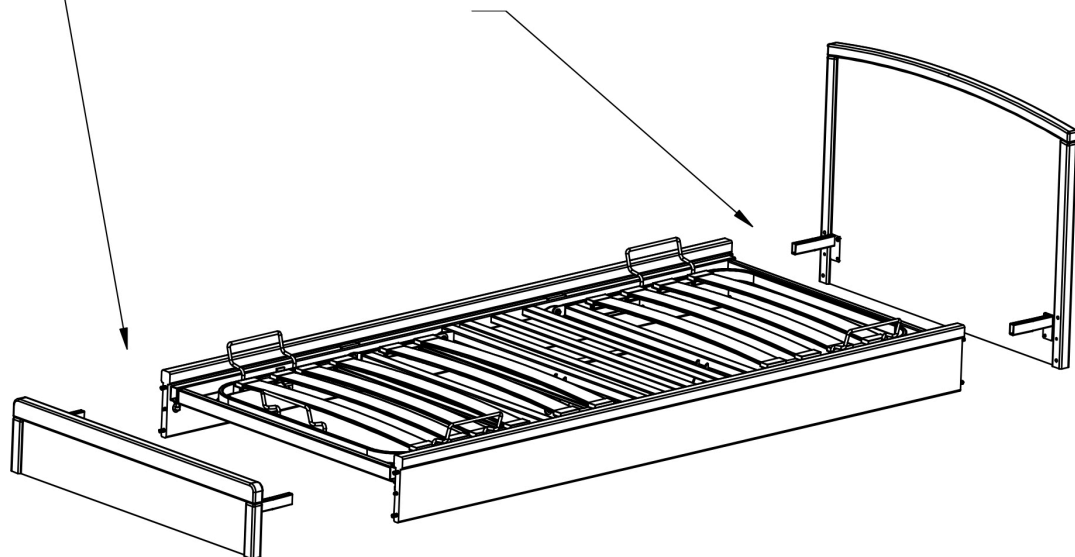
D)

Screw both items (G) and (H) to the end panels using the screw (C). The markups should help you find the right screwing location.



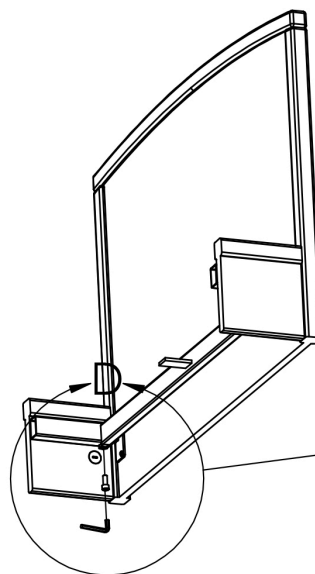
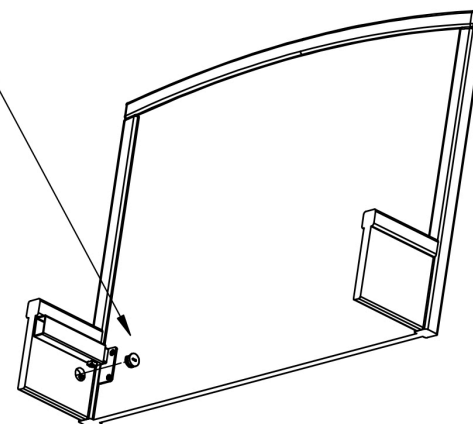
E)

Put the the panels at the end of the mattress platform. Insert the items (H) and (G) into the mattress platform and push the item (B) in the appropriate holes located at the end of the long panels.



F)

Insert the items (E) into the holes located on the inner side of the wooden panel. Screw 1/4 to lock it.



Screw the items (G) and (H) using the screws (F) and the big wrench. Warning: these screws replace the transport screws.

